

RADON ZONE MAP FOR SANTA BARBARA COUNTY

By R. K. Churchill, Associate Geochemist

1995

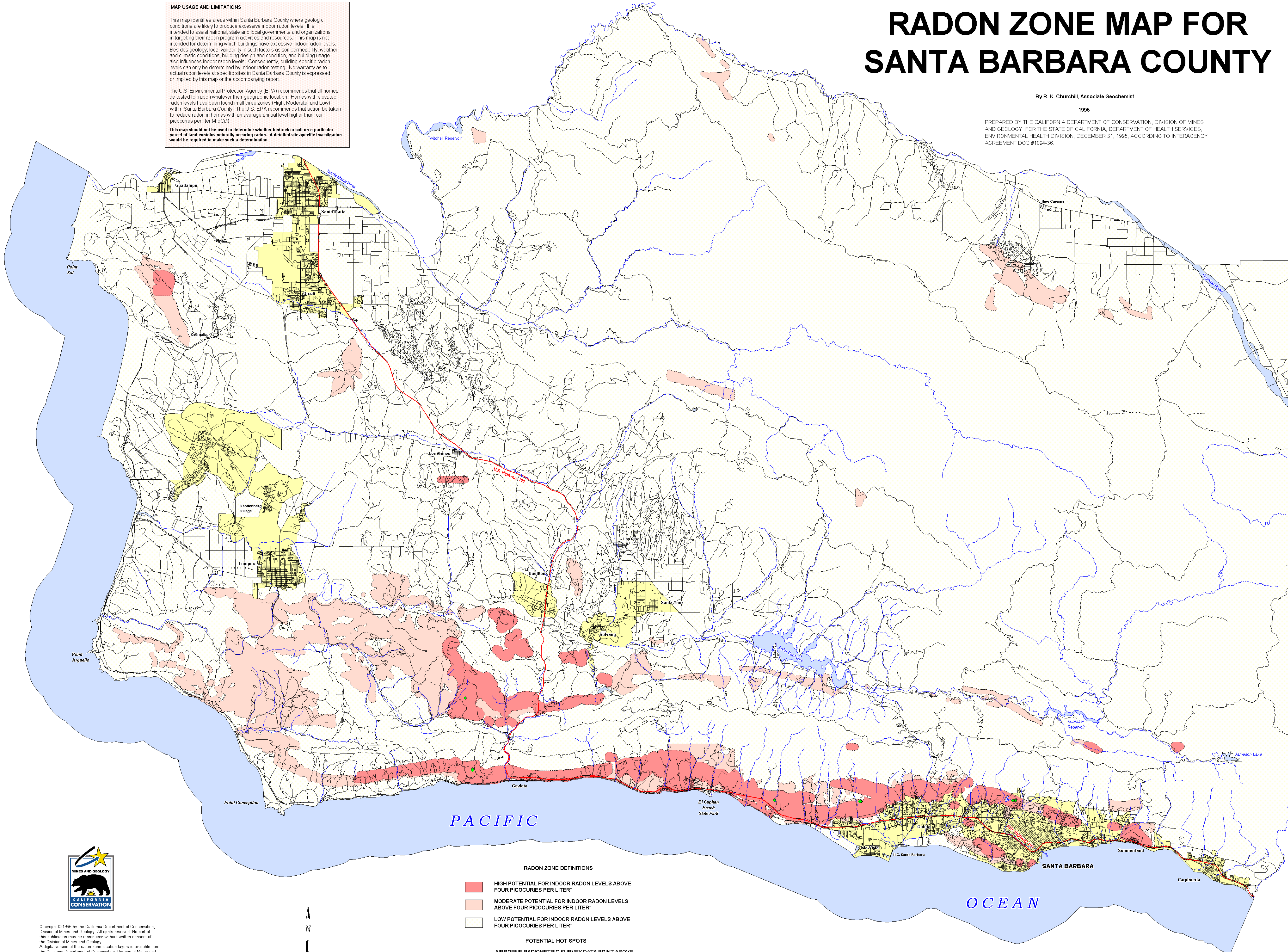
PREPARED BY THE CALIFORNIA DEPARTMENT OF CONSERVATION, DIVISION OF MINES AND GEOLOGY, FOR THE STATE OF CALIFORNIA, DEPARTMENT OF HEALTH SERVICES, ENVIRONMENTAL HEALTH DIVISION, DECEMBER 31, 1995, ACCORDING TO INTERAGENCY AGREEMENT DOC #1094-36.

MAP USAGE AND LIMITATIONS

This map identifies areas within Santa Barbara County where geologic conditions are likely to produce excessive indoor radon levels. It is intended to assist national, state and local governments and organizations in targeting their radon program activities and resources. This map is not intended for determining which buildings have excessive indoor radon levels. Besides geology, local variability in such factors as soil permeability, weather and climatic conditions, building design and condition, and building usage also influences indoor radon levels. Consequently, building-specific radon levels can only be determined by indoor radon testing. No warranty as to actual radon levels at specific sites in Santa Barbara County is expressed or implied by this map or the accompanying report.

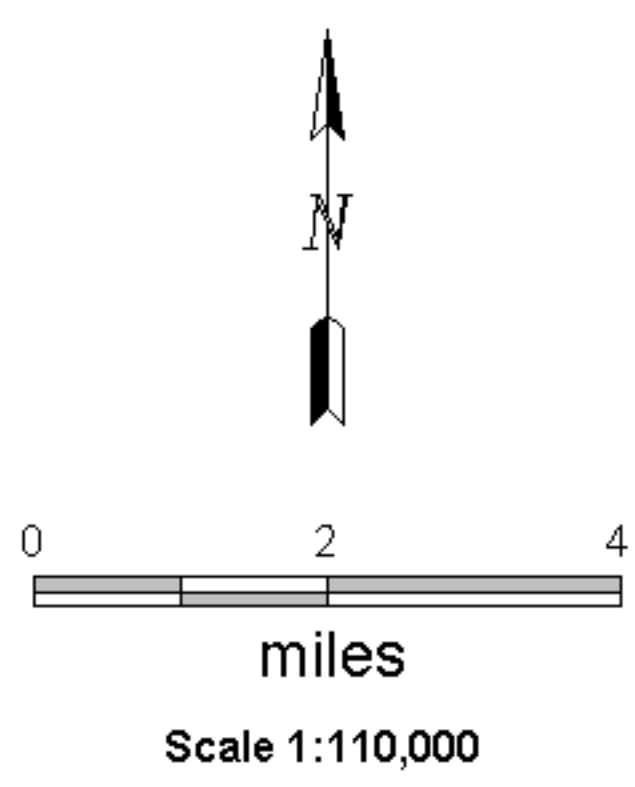
The U.S. Environmental Protection Agency (EPA) recommends that all homes be tested for radon whatever their geographic location. Homes with elevated radon levels have been found in all three zones (High, Moderate, and Low) within Santa Barbara County. The U.S. EPA recommends that action be taken to reduce radon in homes with an average annual level higher than four picocuries per liter (4 pCi/l).

This map should not be used to determine whether bedrock or soil on a particular parcel of land contains naturally occurring radon. A detailed site-specific investigation would be required to make such a determination.



- RADON ZONE DEFINITIONS**
- HIGH POTENTIAL FOR INDOOR RADON LEVELS ABOVE FOUR PICOCURIES PER LITER*
 - MODERATE POTENTIAL FOR INDOOR RADON LEVELS ABOVE FOUR PICOCURIES PER LITER*
 - LOW POTENTIAL FOR INDOOR RADON LEVELS ABOVE FOUR PICOCURIES PER LITER*
- POTENTIAL HOT SPOTS**
- AIRBORNE RADIOMETRIC SURVEY DATA POINT ABOVE 10 PARTS PER MILLION EQUIVALENT URANIUM

Yellow areas indicate incorporated cities. Additional information about the radon zones can be found in the accompanying report.
 * The U.S. Environmental Protection Agency (EPA) recommends four picocuries per liter as the action level for radon reduction.



Copyright © 1995 by the California Department of Conservation, Division of Mines and Geology. All rights reserved. No part of this publication may be reproduced without written consent of the Division of Mines and Geology.
 A digital version of the radon zone location layers is available from the California Department of Conservation, Division of Mines and Geology, 801 K Street, MS 08-38, Sacramento, CA 95814-3531.
 Base map derived from U.S. Census Bureau, 1995 TIGER Data.